

PALYNOS

ISSN 0256-1670

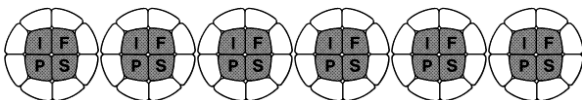
Volume 48 (2) – 2025

NEWSLETTER OF THE INTERNATIONAL FEDERATION OF PALYNOLOGICAL SOCIETIES

<http://palyno-ifps.com/>

CONTENT OF PALYNOS VOL. 48 (2)

PAGE 1:	IFPS BUSINESS
PAGE 2:	NEWS FROM IFPS SOCIETIES
PAGE 4:	NEWS FROM IFPS MEMBERS
PAGE 5:	OBITUARIES
PAGE 9:	FUTURE MEETINGS
PAGE 12:	CURRENT IFPS AFFILIATED SOCIETIES AND COUNCILLORS
PAGE 13:	IMPRESSUM
PAGE 14:	APPENDIX 1
PAGE 15:	APPENDIX 2
PAGE 16:	APPENDIX 3
PAGE 20:	APPENDIX 4



IFPS BUSINESS

PRESIDENT'S MESSAGE

I would ask all members of our affiliated societies, especially those who have an active interest in taxonomy, to read a short editorial piece which was recently published in the journal *Palynology*. It is entitled: "A proposal for the mandatory registration of formal scientific names of fossil plants and algae" by Gravendyck et al., and is free to read and download at:

<https://www.tandfonline.com/doi/full/10.1080/01916122.2025.2569409?src=>

This piece is a proposal that palynologists and palaeobotanists follow the example of the mycological community and establish a mandatory online register for all nomenclatural novelties (new taxa, new combinations etc.). If all new palynomorph species were to be registered in an online register, the compilers of databases such as the Lentin and Williams Index of dinoflagellate cysts would be able to easily update their files. This is instead of painstakingly ploughing through paper after paper searching for the relevant information. In the era of "big data", this seems like an absolute no-brainer.

All that is asked of authors involved in taxonomy would be that they obtain and use unique registration numbers for each taxonomic novelty they are proposing from a dedicated website. The proposed process would be very straightforward and is set out in Gravendyck et al. (2025).

This is simply a proposal at this stage and of course would require formal ratification. The authors of Gravendyck et al. (2025) are seeking views across our community. I would ask all palynologists to read this editorial and, if you have views on this topic, please contact Patrick Herendeen

(pherendeen(at)chicagobotanic.org) or any of the other four authors.

In other news, a new society, the Australasian Palaeobotany and Palynology Group (Palaeo Plants for the Planet) recently joined the Australian Systematic Botany Society as a new official Chapter. You can read about this

exciting development in the International Organisation of Palaeobotany Newsletter #138, pages 7–12 (<https://www.palaeobotany.org>).

Next year we hope to bring you news of the 2028 International Palynological Congress in Calgary, Canada.

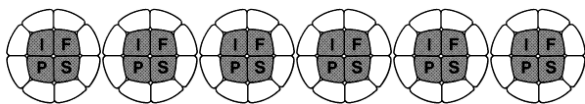
I wish all members of IFPS a fantastic Winter Holiday 2025 and all best wishes for 2026.

Jim Riding, President of IFPS

Email: [jbri\(at\)bgs.ac.uk](mailto:jbri(at)bgs.ac.uk)

Reference

Gravendyck, J., Herendeen, P., Head, M.J., Kvaček, J. and Riding, J.B. 2025. Editorial. A proposal for the mandatory registration of formal scientific names of fossil plants and algae. *Palynology*, <https://doi.org/10.1080/01916122.2025.2569409>



NEWS FROM IFPS SOCIETIES

REPORT ON THE XVI ALL-RUSSIAN PALYNOLOGICAL CONFERENCE, MOSCOW, RUSSIA, 22-26TH SEPTEMBER 2025

The XVI All-Russian Palynological Conference, organized by the Russian Palynological Commission, took place from September 22 to 26, 2025, at the Geological Institute of the Russian Academy of Sciences and the Institute of Geography of RAS in Moscow.



Figure 1. Professor Natalia Bolikhovskaya, honorary president of the Russian Palynological Commission, delivered a plenary address.

The Conference commemorated the 145th Anniversary of Vladimir N. Sukachev's birth, pioneering Russian palynologist and eminent geobotanist. The audience included 92 participants from over 25 research institutes and academic centers across both western and eastern parts of the Russian Federation, Belarus, Azerbaijan and China. The Conference provided a webcast to connect many palynologists from different time zones.



Figure 2. Microscope and visualization tools exhibition hosted by the company D-Micro at the All-Russian Palynological Conference.

There were 80 intriguing oral presentations, 17 posters, three workshops, one exhibition and a cultural walking tour in the heart of Moscow. The majority of sessions were on Quaternary palynology (47%), data analysis techniques (12%) and Archaeopalynology (11%). Only few presentations focused on Mesozoic (8%), Palaeozoic (7%), and Morphology sections (7%).



Figure 3. Visean miospores *Lycospora* and *Schulzospora* coated with gold and explored under a 7500-power ADF F100 motorized microscope with transmitted and reflected light modes (exhibition at the Conference).

One of the highlights of the Conference was a display of contemporary microscopes and visualization tools used to demonstrate diverse palynofossils of varying ages ranging from the Cambrian to the Holocene. This exhibition allowed delegates from various research groups to share their palynological experiences with each other, students and young palynologists.



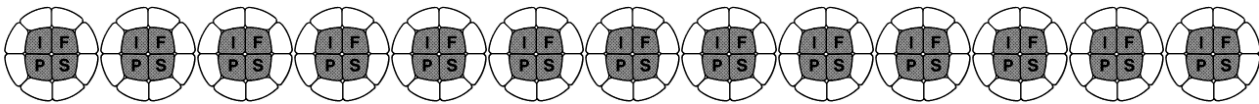
Figure 4. Poster presentations at the All-Russian Palynological Conference.

We are grateful to our project sponsor, OOO D-micro, for hosting this informative event. We thank all members of Organizing committee headed by professor Elena Novenko who is President of Russian Palynological Commission (RPC). Special gratitude goes to professor Natalia Bolikhovskaya, Honorary President of the Russian Palynological Commission and all members of Program committee of the Conference. All of our organizers and participants committed significant efforts and produced fascinating palynological outcomes to ensure the conference's success! All contributions were published as *Palynology in XXI: Proceedings of XVI All-Russian Palynological Conference* and available online at the website polinos.ru/2025/09/19/программа-конференции/. More information is available at <https://polinos.ru>

Dmitriy A. Mamontov
Email: palynologist.dm(at)mail.ru



Figure 5. Group photo of XVI All-Russian Palynological Conference attendees (RAS Geological Institute, Moscow, September, 2025).



NEWS FROM IFPS MEMBERS

THE ROLE OF PALYNOLOGY IN THE SEARCH FOR LIFE ON MARS

In recent weeks, media outlets around the world have reported that NASA’s Perseverance rover may have collected a series of rock samples from the surface of Jezero Crater, Mars, that contain possible biosignatures.

These samples were analyzed using the PIXL X-ray spectrometer, the SHERLOC UV-fluorescence analyser and the Raman spectrometer. After a year of testing alternative hypotheses, a paper published in *Nature* (Hurowitz et al 2025) concluded that

the best explanation is that these biosignatures—composed of vivianite and greigite—are of biological origin.

Curiously, throughout this wide media coverage, journalists, scientists and space science communicators have not referred to this preserved evidence of life in rocks as chemofossils or simply as fossils. On Earth, the first acid-resistant microfossils known are acritarchs from the Roper Group (Northern Territory, Australia), dated to about 1.5 billion years ago (Mesoproterozoic). Since then, acid-resistant microscopic structures have been common components of the terrestrial biosphere, especially since the Early Palaeozoic.

If these Martian biosignatures are indeed biological, the likelihood that Martian sediments host some kind of acid-resistant biological structure is significant. In that case, it would be very useful indeed to have scientists attempt to extract, isolate and study potential palynomorphs from these rocks... wouldn’t it?

To reach more conclusive results, it will be necessary to bring the Perseverance samples back to Earth. Several initiatives aim to make this possible, including the Mars Sample Return (MSR) program—a collaboration between NASA (National Aeronautics and Space Administration) and the ESA (European Space Agency). The most optimistic estimates suggest that the samples could arrive on Earth by 2031.

That gives palynologists at least six years to prepare to:

- Convince the research teams in charge of the samples to provide a small subsample, supported by strong arguments that the Martian biosphere could have generated acid-resistant structures and that palynological processing is an efficient way to detect them.
- Optimize our protocols to require the smallest possible amount of rock with maximum extraction efficiency.
- Adapt our laboratories to minimize contamination.
- Develop Martian sediment analogs for experimental testing.

As a first step, we propose completing the following survey ([LINK](#)) to assess our current capabilities. The responses will be analyzed and discussed during the 58th Annual Meeting of AASP – The Palynological Society, to be held jointly with the XIX Argentine Symposium on Paleobotany and Palynology, September 8–11, 2026, in Trelew, Patagonia, Argentina.

We are standing at the threshold of one of the most important discoveries in human history—one that could transform our understanding of life on Earth and beyond.

The palynological community must take the lead. We are experts in detecting acid-resistant traces of life in rocks. It is time to bring that

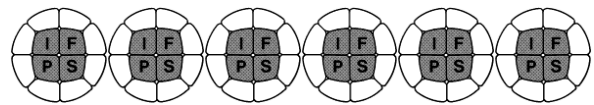
expertise to Martian exploration. Please contact the author to register an interest.

Reference

Hurowitz, J. A., Tice, M. M., Allwood, A. C., Cable, M. L., Hand, K. P., Murphy, A. E., ... & Wolf, Z. U. (2025). Redox-driven mineral and organic associations in Jezero Crater, Mars. *Nature*, 645(8080), 332-340.

Damián A. Fernández

[fdamianandres\(at\)gmail.com](mailto:fdamianandres(at)gmail.com)



OBITUARIES

PROF. MARGARET ADEBISI SOWUNMI (1939–2025)

Professor M. Adebisi Sowunmi (nee Jadesimi) is a well-known environmental archaeologist in Nigeria and Africa (Figure 1). She is Nigeria's foremost professor of Palynology and Environmental Archaeology (Archaeobotanist). Prof M.A. Sowunmi was born on 24th September 1939 in Kano, Northern Nigeria; she obtained a B.Sc. (Special Botany) (Lond.) Second Class Honours, Upper Division, from the Department of Botany, University College London (now University of Ibadan) in June 1962. In those days, if you made a high grade, you proceeded for the PhD. For her PhD, she started studying palynology with Prof G. Puri, an Indian; but shortly after, he left for his home country. At the time, there were no palynology experts in the Nigerian University system.

In 1964, Adebisi Sowunmi was awarded a postgraduate scholarship by the University of Ibadan (1963-1967), and in April of that same year, travelled to Stockholm, Sweden, and spent six months studying Palynology in the Laboratory of Palynology under Prof Otto

Gunnar Elias Erdtman. Her Ph.D. work-- *On the Pollen Morphology of the Palmae and its bearing on Taxonomy* was supervised by Prof Otto Gunnar Elias Erdtman (18 November 1897-18 February 1973), a Swedish botanist, who is regarded as the Father of modern Palynology (Figure 1). Prof Erdtman was a highly gifted artist who drew the morphology (accurate details) of thousands of pollen grains around the world. He introduced methods of pollen analysis particularly the acetolysis method, developed the pollen graphical indicator known as the palynogram that displays the four major features of a pollen grain namely the polar view, equatorial view, exine pattern and exine structure. He also founded the palynology journal *Grana Palynologica* in 1954 (which became *Grana* in 1970) which is one of the leading palynology journals in the world today. He was a palynology genius. He received his PhD at 22 years, trained and worked under Prof Ernst Jakob Lennart von Post (June 16, 1884 - January 11, 1951), a Swedish professor of geology at the University of Stockholm, Sweden (Figure 1). Prof Post is regarded as the father of pollen analysis, having presented the technique to an audience in Oslo, Norway, in 1916. He was the first to publish quantitative analysis of pollen commonly referred to as pollen analysis. Therefore, Ibadan and Sweden, through Sowunmi, have a very rich palynology history and connection and Sowunmi, having been trained by the best in the discipline bequeathed such scientific heritage to her students.

On July 27, 1967, M. Adebisi Sowunmi earned a Ph.D. (Botany) degree from the University of Ibadan becoming the first Nigerian to obtain such a degree (Figure 1). She also trained under well-known palynologists and global palynology icons including Professor K. Faegri at the University of Bergen, Norway (1971); Mme M. van Campo in Montpellier, France (1971) and Professor Dan Livingstone, Durham, University of North Carolina, USA.

In the 1970s, much attention was not paid to the complex interactions between

hominins/humans and the rest of the environment in the archaeology curriculum in the University. Sowunmi stressed that humans, being major parts of the environment were very crucial and active stakeholders in the environment (Butzer, 1975, 1982). She pioneered the teaching and research of environmental archaeology and palaeo-ethnobotany in Nigeria and worked on the recognition of anthropogenic impacts on the environment with pollen evidence from West and Central Africa. Sowunmi had been influenced by several scholars among which were Prof G.W. Dimbleby. In 1979, Adebisi Sowunmi received training under Prof G.W. Dimbleby (1917-2000), a renowned pioneer Professor of Environmental Archaeology, at the Institute of Archaeology, University College London, United Kingdom.



Figure 1. 1. Margaret Adebisi Sowunmi on graduation day, November 17, 1967; 2. The famous photograph of Dr. Sowunmi working on the microscope; 3. Prof Otto Gunnar Elias Erdtman; 4. Prof Ernst Jakob Lennart von Post; 5. Sowunmi with the Dan Livingstone and the Duke University team of the African Lake studies project.

She was appointed as a post-doctoral research fellow at the Archaeology Unit of the Institute of African Studies, University of Ibadan at the instance of Prof. Thurstan Shaw, the doyen of Archaeology in Nigeria, in December 1967. She was appointed Lecturer in newly created Department of Archaeology in 1970; promoted to Senior Lecturer, University of Ibadan, with effect from 01 October, 1975; promoted to the grade of Professor, Department of Archaeology and

Anthropology, University of Ibadan with effect from 01 October, 1982. In the 1968/1969 academic year, she single-handedly developed the palynology laboratory and started the pollen reference collections, a basic pre-requisite for the correct identification of pollen and spores retrieved from fossil deposits and/or extant media such as flowers, honey and the atmosphere. She was Visiting Professor, Department of African Archaeology, Uppsala University, Sweden (01 October-23 December, 1997); Visiting Professor, Institute of Archaeology, University College London, England (04 January-23 March, 1998) and Visiting Professor, Department of African Archaeology and African Archaeobotany, Johann Wolfgang Goethe-Universitat Frankfurt am Main, Germany (April-29 June, 1998). In January, 2003, Adebisi Sowunmi was awarded an honorary Doctor of Philosophy degree by Uppsala University, Uppsala, Sweden (Figure 2). It is on record that with the exception of the very few Nigerians who studied abroad, virtually all others had their training directly or indirectly at the University of Ibadan. Thus, under Professor M. Adebisi Sowunmi, the Palynology laboratory in the Department of Archaeology and Anthropology, University of Ibadan became the Jerusalem of palynology in Nigeria, and possibly West Africa.

Prof Sowunmi's teaching philosophy included **i.** sharing with younger people some of the knowledge that she had been privileged to acquire or discover, with the hope of broadening and deepening their own perspectives in the particular subjects of my discipline and on life; **ii.** approach students, first and foremost as people who have their own integrity, and **iii.** encourage discussion between my students and me and among themselves, in order to stimulate them to critically share their knowledge with others and to express their views on the topics taught, as appropriate. The courses that she taught and/or supervised were:

Undergraduate: Palynology; Palaeobotany; Environmental Archaeology; Ethnobotany.

Postgraduate: Advanced Palynology; Quaternary studies in Archaeology; Environmental Archaeology; Research design and methodology; Palaeoecological laboratory methods and principles; Ethnobotany; Archaeopalynology; Palynology in the honey industry; Palynology in the petroleum industry.

Prof Sowunmi officially retired from the University of Ibadan in 2004, having attained the statutory age of 65yrs. However, she continued to serve as an adjunct lecturer, teaching palynology courses and supervising BSc and MSc students until she turned 80 in 2019. Professor Sowunmi trained many generations of students especially PhDs from her first in 1982 and the last in 2023, spanning a period of 41 years.

Ph.D. thesis supervised in Palynology & Environmental Archaeology (Ecological Anthropology)

1. A.C. Oyede. A pollen morphological study of the Sterculiaceae and its bearing on the taxonomy of the family. 1981.
2. P.A. Oyelaran. Archaeological and palaeoenvironmental investigations in Iffe-Ijumu area, Kwara State, Nigeria. 1991.
3. R.A. Alabi. An environmental archaeological study of the coastal region of southwestern Nigeria, with emphasis on the Badagry area. 1998.
4. O. Ige. Late Tertiary environments in the Niger Delta, Nigeria, as indicated by pollen analysis. 2002.
5. A.P. Adeonipekun. Application of Late Tertiary palynofloral changes as a bio-sequence stratigraphic tool in the western Niger Delta. 2006.
6. Femi Olajide Adebayo. Palynological signatures as a tool in the biostratigraphic refinement of Chev-1, 2 and 3 in the shallow offshore western Niger delta, Nigeria. 2010.
7. E.A. Orijemie. Humans and the environment in the rainforests of southern Nigeria in the Late Quaternary: palynological and archaeological evidence. 2013.
8. A. Oyelami. A Palynostratigraphic Study of the Environments and Thermal Maturation of Onshore Oredo Field, Niger Delta. 2023.



Figure 2. 1. In January, 2003, Adebisi Sowunmi was awarded an honorary Doctor of Philosophy degree by Uppsala University, Uppsala, Sweden; 2. A celebration of the 50th anniversary of PhD Thesis of Prof M.A. Sowunmi in April 2018 organized by Orijemie, E.A.; 3. Prof Sowunmi with her first PhD student, Dr C. Oyede in 1999 at the Stratigraphic Committee of the Niger Delta, Biostratigraphic Committee (STRATCOM); 4. Prof Sowunmi with her last PhD student, Dr A. Oyelami, November 17, 2023.

Prof Sowunmi supervised the second Ph.D. in Botany (Palynology, Christopher Oyede) and the first Nigerian Ph.D. in Environmental Archaeology (with Dr Phillip Allsworth-Jones) in 1981 and 1991 respectively. She (with Kogbe, C.A.) was the first to indicate the age and palaeoenvironment of the Gwandu Formation (Continental Terminal), North-Western Nigeria; she produced the first descriptions of some Eocene pollen of the Ogwashi-Asaba Formation, South-Eastern Nigeria; published the first paper on the Late Quaternary vegetation and environmental history of Nigeria and the pollen morphology of extant Nigerian plants which are also ecological indicators; carried out the first pollen analysis of honey from the forest and savanna zones of Nigeria; obtained the first botanical evidence of the beginning of agriculture in Nigeria; made the first pollen analysis of an archaeological site in Nigeria (with E.O. Awosina); and indicated the relevance of archaeology in national development. She has also written on the social and economic context of the practice of archaeology in Africa and was a visiting professor at the University of Uppsala, the UCL Institute of Archaeology in the 1990s and

Johann Wolfgang University, Frankfurt from 1997-1998. At Ibadan and elsewhere that she has taught, Prof Sowunmi is revered as the Matriarch of Nigerian Palynology, and a strong advocate of originality in research and academic excellence.

Professor Sowunmi is Nigeria's palynological icon. She was very vast in the knowledge of palynology and very versatile in its applications and contributed immensely to the application of palynology in the Oil Industry. In 1993, Sowunmi produced the Palynofacies of recent Niger Delta sediments, a project that was commissioned by Shell Petroleum Development Company (SPDC), and in 1995, produced the Botanical affinities of Niger Delta sporomorphs, also commissioned by Shell Petroleum Development Company (SPDC) with the photographs and descriptions of over 550 pollen grains, extinct and extant. In 2002, Sowunmi, along with two other colleagues, Lawal, O and Agwu, C.O.C., produced the palynological taxonomy project of the Cenozoic Niger Delta (145 pp. + 1 map and 4 charts) and the Cenozoic palynomorphs of the Niger Delta, Nigeria. [29 plates]. Both reports were commissioned by the Stratigraphic Committee of the Niger Delta, Biostratigraphic Committee. These technical reports serve as highly invaluable resources for researchers and players in the oil industry.

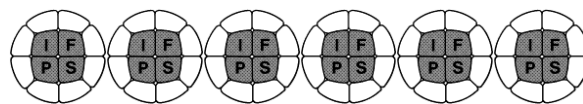
Professor Sowunmi pioneered the application of palynology in Botany (Palaeoethnobotany), Archaeology (Archaeopalynology) and honey (Melissopalynology). She developed the master's courses, the application of palynology in the Oil Industry (MEB 741) and the application of palynology in the Honey Industry (MEB 742). Prof Sowunmi remains one of the very few lecturers in the University of Ibadan that taught and supervised students in two departments—Departments of Archaeology and Anthropology, and Botany and Microbiology (now Botany).

Professor M. Adebisi Sowunmi along with C. O. C. Agwu, O. Lawal (of blessed memory), and A. C. Oyede (of blessed memory) inaugurated the Palynological Association of

Nigeria (PAN) was at the University of Ibadan on November 2, 1985. The biennial conferences (since 2017) of PAN provide a platform for the presentation of papers on the areas of research of students and senior members of the association. Prof Sowunmi never missed any of the PAN conferences which were held in different places namely Ibadan, Lagos Nsukka, and Akungba-Akoko. She served as a rallying point for palynologists in Nigeria all of whom loved to hear her speak and learn from her wealth of wisdom. The logo of the Palynological Association of Nigeria is the shape of the *Elaeis guineensis* pollen. *Elaeis guineensis* the iconic fruit-bearing oil palm tree is Prof Sowunmi's favourite pollen grain. The pollen is a symbol of her legacies, wisdom and majesty in the discipline of palynology, globally. She produced major papers in palynology particularly those published in 1968 and 1972 in which she elucidated the pollen morphology of 350 palm species and their evolutionary trends in aperture development. In 1973, and 1995, she published a 2-part volume of the first and the most comprehensive descriptions of the pollen morphology of woody plants in Nigeria. These publications are invaluable resources to palynological studies in Africa and the tropics in general. These papers are also very useful in establishing the accurate identities of fossil palms and other fossil forms that characterised the Late Cretaceous (Campanian-Maastrichtian) and Cenozoic of tropical regions. In 1981, she published, for the first time, the Late Quaternary palaeoenvironments of the Niger Delta dating to the last 40ka years BP, and demonstrated the earliest evidence of farming in the rain forest region of West Africa.

We have lost an extremely rare gem and an academic giant. We pray for the peaceful rest of this heroine and giant of palynology and environmental archaeology.

Emuobosa Akpo Orijemie
University of Ibadan



FUTURE MEETINGS

2026

2026 3RD LATIN AMERICAN PALEONTOLOGY FORUM, 16 – 20TH FEBRUARY 2026

It will be held from February 16-20, 2026, at UAM Iztapalapa, Mexico City. Organizers: Dr. Elizabeth Chacón Baca, Subdirector of Internationalization, Faculty of Earth Sciences, UANL, SECITI- Project 2439-CF-2023-2025. M.Sc. Delfino Hernández Láscars, Laboratory of Geological Hazards and Paleontology, Division of Biological Sciences, UAM Iztapalapa.

Two courses will be offered as part of the Forum:

- Course 1: Biological Evolution through Palynomorphs. Instructor: M. di Pasquo
- Course 2: Forensic Geology and Palynology. Instructor: L. Povilauskas.

For more information, please see Appendix 1.

2026 RADICI – RESEARCH IN ARCHAEOBOTANY, VIRTUAL MEETING, 3RD – 4TH JUNE 2026

The first conference RADICI, which stands for “Research in Archaeobotany: Dialogues for Interdisciplinary Collaborations and Innovations”, will be held on June 3–4, 2026, in an online format. The meeting is organised by a group of early-career Italian researchers in archaeobotany and palynology.

With the aim of fostering inclusivity beyond national borders, the conference welcomes all scholars and practitioners working on Italian archaeobotanical and palynological records, regardless of nationality. Researchers who feel a strong connection to this type of research, even if they study materials from other countries, are also warmly invited to participate.

Further information is available at: <https://sites.google.com/view/congresso-radici>

2026 PALAEO-NOMA 2026, BOON, GERMANY, 22ND-27TH AUGUST 2026

Next Summer, Bonn University will host a week-long programme centred on two things that underpin much of environmental and palaeoenvironmental research: biological nomenclature and open data stewardship.

The week begins with the Nomenclature (Madrid Code) Workshop (23rd-25th August), led by Dr Julia Gravendyck. This workshop introduces how fossil and living organisms are formally named, how nomenclatural rules operate in practice, and why debates over names matter for scientific communication, data integration, and long-term research comparability.

From 26-27th August, the focus shifts to data management. In the hands-on Neotoma Workshop, Dr Steffen Wolters will guide participants through preparing, validating, and uploading paleoenvironmental datasets using Tilia as an interface to the Neotoma Palaeoecology Database. Emphasis is placed on practical workflows, including metadata preparation, data validation, and responsible contribution to shared research infrastructure.

The programme is designed to be accessible at all career stages and may be especially useful for master's students and early-career researchers navigating nomenclature rules or preparing their first datasets for open repositories.

Participants may register for either workshop individually or attend the full programme. The week opens with an evening welcome event at the Botanical Gardens, offering space for discussion and connection ahead of the workshops.

Registration and booking details will be released in **February 2026**. For more information, please check the appendix 2.

2026 SAPP – AASP, TRELEW, ARGENTINA, 8-11 SEPTEMBER 2026



The 19th Argentine Symposium on Paleobotany and Palynology will be celebrating jointly with the 58th Annual Meeting of the AASP-The Palynological Society in Trelew, Argentina in September 8-11, 2026. For more information, please check Appendix 3 in this issue.

2026 12TH EUROPEAN PALAEOBOTANY AND PALYNOLOGY CONFERENCE (EPPC), MÜNSTER, GERMANY, 20-24TH SEPTEMBER, 2026

The next EPPC Conference will take place in Münster, Germany, in 2026, co-hosted by the Palaeobotany Group (University of Münster) and the LWL-Museum of Natural History in Münster, Westphalia, Germany. For detailed information, please check Appendix 4 in this issue. Important: The deadline for proposals for symposia is September 1st, 2025! Please send your proposals to Christian Pott at [christian.pott\(at\)lwl.org](mailto:christian.pott(at)lwl.org).

2026 PALYNOLOGICAL SOCIETY OF CHINA (PSC) CONFERENCE, 2026, ZHENGDING, HEBEI PROVINCE, 2026

More information will be available here in due times, or on:
<http://www.chinapsc.cn/zyfh/bfxfh/en/about>

2027

2027 XXII INQUA CONGRESS IN LUCKNOW, INDIA, FEBRUARY 2027

The next INQUA Congress will take place Lucknow's Birbal Sahni Institute of Palaeosciences in February, 2027. More information will be available at <https://www.bsip.res.in>.

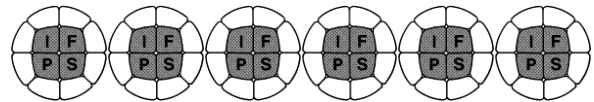
2027 11TH NPP WORKSHOP IN VILNIUS, LITHUANIA

The next NPP Workshop will take place in Lithuania in 2027. More information will be available in due times.

2028

2028 XVI IPC / XII IOPC MEETING, CALGARY, ALBERTA, CANADA

The 16th IPC and 12th IOPC will be held August 7–11, 2028, in Calgary, Alberta, Canada. The meeting will take place at the Calgary TELUS Convention Centre, located in the heart of downtown Calgary. Potential field trips may include visits to the Royal Tyrrell Museum of Palaeontology, the Late Cretaceous deposits in Dinosaur Provincial Park (a UNESCO World Heritage Site), the K–Pg boundary exposure at Dry Island Buffalo Jump Provincial Park, and several Paleocene fossil plant localities of the Paskapoo Formation.



CURRENT IFPS AFFILIATED SOCIETIES AND COUNCILLORS

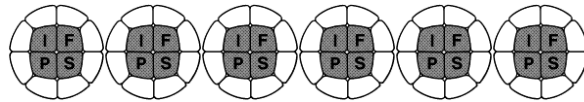
The current list of the IFPS officers and IFPS councillors is provided below. The IFPS president (James B. Riding), IFPS secretary-treasurer (Fabienne Marret-Davies), IFPS editor of *PALYNOS* (Encarni Montoya), and the IFPS Web-Master (Sandra Brügger) should be informed of any errors or necessary changes. Please inform the IFPS Officers of possible website or email address changes.

IFPS Officers	Affiliation	Email
IFPS President James B. Riding	British Geological Survey, UK	jbri(at)bgs.ac.uk
IFPS Past President Jean Nicolas Haas	University of Innsbruck, Austria	Jean-Nicolas.Haas(at)uibk.ac.at
IFPS Secretary-Treasurer: Fabienne Marret-Davies	University of Liverpool, UK	F.Marret(at)liverpool.ac.uk
IFPS Editor of <i>PALYNOS</i> Encarni Montoya	Institute of Geosciences Barcelona, Spain	encarnacionmontova(at)gmail.com
IFPS Web-Master Sandra Brügger	University of Basel, Switzerland	sandra.bruegger(at)unibas.ch
IFPS affiliated Societies	Acronym & Website	Councillors
American Association of Stratigraphic Palynologists – The Palynological Society	AASP – TPS http://www.palynology.org	Sophie Warny
Arbeitskreis für Paläobotanik und Palynologie	APP https://www.palaeontologische-gesellschaft.de/ueberuns/arbeitskreise/ak-palaeobotanik-palynologie/	Olaf Lenz
Arbeitskreis für Vegetationsgeschichte der Reinhold-Tüxen-Gesellschaft	AVRTG http://www.reinhold-tuexen-gesellschaft.de/	Lyudmila Shumilovskikh
Asociación Latinoamericana de Paleobotánica y Palinología	ALPP http://www.ufrgs.br/alpp	Mercedes di Pasquo
Asociación de Palinólogos de Lengua Española	APLE https://aple.csic.es/	Pilar S. Testillano
Association des Palynologues de Langue Française	APLF https://assoaplf.wixsite.com/website	Vincent Montade
Canadian Association of Palynologists	CAP https://capacp.wordpress.com/	Vera Pospelova
Collegium Palynologicum Scandinavicum	CPS www.palynology.info	Julia Gravendyck
Commission Internationale de Microflore du Paléozoïque	CIMP http://cimp.weebly.com/	Jiří Bek
Gruppo di Palinologia della Società Botanica Italiana	GPSBI http://www.societabotanicaitaliana.it/gruppi/gruppo-palinologia-e-paleobotanica-gpp-sbi/21	Assunta Florenzano
International Association for Aerobiology	IAA https://iaaerobiology.org/	Dorota Myszkowska
Linnean Society Palynology Specialist Group	LSPSG http://www.linnean.org/	Barry Lomax
Organisation of Czech and Slovak Palynologists	OCSP http://www.ocsp.eu/	Petr Skupien
Palynological Association of Nigeria	PAN https://www.facebook.com/p/Palynological-Association-of-Nigeria-100070522793498/	Emuobosa Orijemie
Palynological Society of China	PSC http://www.chinapsc.cn/zyfh/bfxfh/en/about	Jianguo Li
Palynological Society of Japan	PSJ http://www.psj3.org/	Naoko Sasaki
Palynological Society of Poland	PSP	Milena Obremaska
Palynologische Kring (The Netherlands)	PK http://www.palynologischeskring.nl	Stefan Uitdehaag
Russian Palynological Commission	RPC https://polinos.ru/	Dmitry Mamontov
Society for the Promotion of Palynological Research in Austria	AUTPAL http://www.autpal.at	Reinhard Zetter
The Micropalaeontological Society Palynology Group	TMS https://www.tmsoc.org	Luke Mander
The Palaeobotanical Society India	PBS http://palaeobotanicalsociety.org	Hukam Singh
Turkish Committee for Palynology	TCP	Recep Hayrettin Sancay
Affiliation/Membership of the IFPS at the:		
International Union of Geological Societies	IUGS	Marianna Kováčová
International Union of Biological Societies	IUBS	Jean Nicolas Haas
Former Societies of the IFPS:		
International Association for African Palynology	AIPA/IAAP	
Palynological and Palaeobotanical Association of Australia	PPAA	
Palynologists and Plant Micropalaeontologists of Belgium (until 2024)	PPMB	
Philippine Palynological Society	PPS	

PALYNOS (ISSN 0256-1670) is published bi-annually (in summer and winter) and is distributed electronically to all IFPS Councillors for local distribution to individual members of their **International Federation of Palynological Societies (IFPS)** affiliated society. The newsletter is also posted on the IFPS website:
<http://palyno-ifps.com/>

We welcome news items, reports on society activities, reviews etc. and members should forward these to the newsletter editor:

Encarni Montoya
encarnacionmontoya(at)gmail.com



APPENDIX 1: 3RD LATIN AMERICAN PALEONTOLOGY FORUM



TERCER FORO LATINOAMERICANO DE PALEONTOLOGÍA

Hablemos de Fósiles

UAM Iztapalapa, Ciudad de México
FEBRERO 16-20 DE 2026

ORGANIZAN
DRA. ELIZABETH CHACÓN BACA
SUBDIRECCIÓN DE INTERNACIONALIZACIÓN,
FACULTAD DE CIENCIAS DE LA TIERRA, UANL,
SECITI - PROYECTO 2439-CF-2023-2025
M. C. DELFINO HERNÁNDEZ LÁSCARES
LABORATORIO DE RIESGOS GEOLÓGICOS Y PALEONTOLOGÍA
DIVISIÓN DE CIENCIAS BIOLÓGICAS, UAM IZTAPALAPA

PROGRAMA

Lunes 16 de Febrero de 2026

1. Acto inaugural del 3.er Foro Latinoamericano de Paleontología: *Hablemos de Fósiles*, Depto. Ciencias Biológicas, UAM Iztapalapa.
2. *Reseña del foro Hablemos de Fósiles y Bienvenida*. Dra. Elizabeth Chacón Baca, Facultad de Ciencias de la Tierra, UANL, NL.
3. *Preservación de fósiles como Patrimonio Cultural y Científico (Argentina)*. Dra. Mercedes Di Pasquo, presidenta de la Asociación Latinoamericana de Paleobotánica y Palinología.
4. *Paleontología Forense*. Dra. Leticia Povilauskas, Universidad de La Plata, Argentina.
5. *La Colección de Plantas Fósiles del Pensilvanico-Permico de la UAM Iztapalapa, Una ventana abierta al Tiempo*, Dr. Delfino Hernández Lascars, UAM Iztapalapa.
6. *Plantas fósiles, su recuperación y preservación*, Dr. Juan Di Nardo, Universidad Nacional del Sur y CONICET, Argentina
7. *La Sociedad Mexicana de Paleontología y la revista Paleontología Mexicana: una misma comunidad científica*, Dr. Josep Moreno Bedmar, IG, UNAM
8. Apertura del Foro: abierto a todos los participantes para preguntas, debate, propuestas, y más....

Martes 17 y Jueves 19 de Febrero de 2026
Curso I: Evolución Biológica a través de palinomorfos

Miércoles 18 de Febrero de 2026
Curso II: Geología y palinología forense

Jueves 19 de Febrero de 2026
Continuación del Curso I: Evolución Biológica a través de palinomorfos

GEOLOGÍA Y PALINOLOGÍA FORENSE

CURSO PRESENCIAL DE 5 HRS

SEDE: LABORATORIO DE RIESGOS GEOLÓGICOS Y PALEONTOLOGÍA, DEPARTAMENTO DE BIOLOGÍA DIVISIÓN DE CIENCIAS BIOLÓGICAS Y DE LA SALUD, UAM IZTAPALAPA, CIUDAD DE MÉXICO

Fecha: Miércoles 18 de febrero de 2026

Horario:
Mier. 9 – 12 hrs
Pausa comida: 12 – 14 hrs
Mier 14 – 16 hrs.

Cuota de Recuperación: \$ 550
Informes e inscripciones:
exograplus@gmail.com

DRA. LETICIA POVILAUSKAS
UNIVERSIDAD DE LA PLATA, ARGENTINA

FUNDAMENTOS Y APLICACIONES DE PALINOLOGÍA: LA EVOLUCIÓN BIOLÓGICA A TRAVÉS DE PALINOMORFOS

CURSO PRESENCIAL DE 16 HRS

SEDE: DEPARTAMENTO DE BIOLOGÍA DIVISIÓN DE CIENCIAS BIOLÓGICAS Y DE LA SALUD, UAM IZTAPALAPA, Cd. MÉXICO

Martes 17 de y jueves 19 de febrero de 2026

Horario: Matutino y vespertino
Ma. 8 a 12 y 14 a 18 hrs
Juev 8 a 12 y de 14 a 18 hrs

Cuota de Recuperación: \$900.00 MXN
Informes e inscripciones:
exograplus@gmail.com



TERCER FORO LATINOAMERICANO DE PALEONTOLOGÍA: HABLEMOS DE FÓSILES
Organizar: Dra. Elizabeth Chacón Baca, Subdirección de Internacionalización, Facultad de Ciencias de la Tierra, UANL / Dr. Delfino Lascars, Laboratorio de Riesgos Geológicos y Paleontología, Departamento de Biología, División de Ciencias Biológicas, UAM Iztapalapa



C I C Y T T P



APPENDIX 2: PALAEO NOMA 2026

PalaeoNoma 2026

Nomenclature
& Neotoma

Bonn 22–27 August 2026

WORKSHOP

SAVE THE DATE	22	Ice Breaker @ Castle & Botanic Gardens Bonn
	23–25	Part 1: Nomenclature (Madrid Code)
	26–27	Part 2: Tilia & Neotoma

Attend Part 1 & 2
separately or
together

Travel Grants
AVAILABLE

Application
Opening Spring
2026



follow us
for more info on
[@palaeonoma2026](#)

**MORE
COMING
SOON**



Funded by
the European Union

funded by COST Action:
Open Palaeoecological
Data – analysing the past
building foresight
(PalaeOpen)

**1st Circular comes
in Early 2026**

Nomenclature 3 Days

Curious to learn about the rules governing the naming of fossil fungi, algae and plants?

10 sessions à 90 mins,
alternating input & application on case studies

We will teach you the principles of how to:

- name a new species
- check existing names
- solve nomenclature problems in stepwise case analysis

all using the new **2025 Madrid Code rules**

Tilia&Neotoma 2 days

Interested to share your palaeoenvironmental data with the scientific community?

8 sessions à 90 mins,
alternating input & working with your own data

using Tilia software as an interface to Neotoma Paleocology Database we will teach you how to:

- enter data with correct element, unit, context and taphonomy
- work with Tilia taxa tables
- add full range metadata

**Become a Neotoma
Data Steward**

Organizers

Dr. Julia Gravendyck Dr. Steffen Wolters Dr. Lyudmila Shumilovskikh Ayaka Nguyen MSc. Emelie Lüke BSc.

APPENDIX 3: 1ST CIRCULAR OF EPPC



🦋 Earl Bird Registration – Is Now Open! 🦋

The registration fee (USD) covers access to all academic activities of the meeting, morning and afternoon coffee-breaks, and ice-breaker reception.

	Category 1		Category 2	
	Member	Non-member	Member	Non-member
Professionals	USD 110	USD 190	USD 165	USD 270
Graduate students	USD 55	USD 100	USD 90	USD 150
Undergraduate students	USD 40	USD 70	USD 60	USD 100

Category 1 Participants affiliated with institutions in South American countries or with a Category 1 Human Development Index (HDI) ≤ 0.880 , according to the United Nations Development Programme (UNDP). Official ranking

Category 2 Participants affiliated with institutions in countries with an HDI > 0.880 , according to the UNDP. Official ranking

Member Active membership in any of the following scientific societies:



<https://palynology.org/>

<https://alpaleobotanicapalinologia.blogspot.com/>

<https://www.apaleontologica.org.ar/>

<https://botanicaargentina.org.ar/>

For Early Career Researchers (ECR) only: students and post-docs

The registration also includes an Early Career Networking gathering for all students and post-doctoral fellows.

ECR Luncheon: If you are an ECR and interested to join this event, please add this item to your registration so that we can get a head count. It is free.

Support Student Participation – Donate USD 100

We invite all members of our community to help strengthen the next generation of palynologists and paleobotanists. By contributing **USD 100**, you will directly support **student grants** that provide essential assistance for **food, accommodation, or travel**. With your support, we can offer more grants and expand opportunities for early-career researchers who might otherwise be unable to attend the meeting. Help us continue building an inclusive and inspiring event for all.

🌿 Call for Thematic Sessions – Deadline Extended! 🌿

Great news! The **19th Argentine Symposium on Paleobotany and Palynology (SAPP)** and the **58th Annual Meeting of AASP – The Palynological Society (AASP-TPS)** are extending the deadline for Thematic Session proposals—and we're excited to share that submissions are already coming in from around the world!

If you've been considering proposing a session, this is the perfect moment to join in and help shape a dynamic, international scientific program.

New important dates:

- Submission deadline: *February 15, 2026*
- Notification of selected proposals: *February 28, 2026*

Thematic Sessions offer a unique platform to spotlight emerging research areas, innovative applications, and international collaborations in palynology and paleobotany. Whether you want to focus on a specialized topic, highlight a collaborative network, or spark discussion on cutting-edge methods — we want to hear from you!

Proposals must be submitted via the following Google Form:

<https://forms.gle/aWUCndMPSWqcyxwU8>

The form must include:

- Full name of the session convener/s
- Email address
- Institutional affiliation
- Potential participants
- Title of the session
- *Summary of the proposal* (max. 150 words)

Proposals not selected as Thematic Sessions may be included in the **regular scientific program**.

Speakers and Chairs

Each Thematic Session may last up to 120 minutes, which can be split into two blocks of different lengths, with a *coffee break* in between. Sessions may include one extended talk (optional) and three to five shorter presentations, selected from the submitted abstracts. Additional contributions may be included as posters.

Presentation time (including Q&A) will be 30 minutes for the extended talk and 20 minutes for regular presentations. These times may be slightly adjusted to fit the final schedule.

Sessions must be moderated by at least one registered participant (*chair*). A second person (*co-chair*) will be assigned by the organizers to provide technical, logistical, and/or scientific support. Upon acceptance of the Thematic Session, the speaker delivering the extended talk must submit an abstract by March 30, 2026, and complete registration by May 1, 2026.

Rooms and AV Equipment

Standard conference rooms will be assigned to Thematic Sessions, with necessary AV equipment and on-site technical support.

The organizing committee is currently evaluating the implementation of **live automatic subtitles (Spanish/Portuguese ↔ English)** to facilitate bilingual participation.

For questions or further information please write to: trelew2026@gmail.com

Check our website <https://palynology.org/58th-aasp-tps-and-19th-sapp/> for the latest information regarding the event.

Get ready! The Second Circular is coming soon with more updates and details.

See you in Trelew!

Organizing Committee

Follow us on

Instagram: [@sapptrelew2026](https://www.instagram.com/sapptrelew2026)

X: [@AASPTPS](https://twitter.com/AASPTPS)

Facebook: [AASP The palynological Society](https://www.facebook.com/AASP.The.palynological.Society)



MEF
Museo Paleontológico Egidio Feruglio



APPENDIX 4: 1ST CIRCULAR OF EPPC

Where science resides:
The Prince-Bishops Palace in Münster.
Photo: Westfälischer Hansebund e.V.



FIRST CIRCULAR

EUROPEAN
PALAEOBOTANY AND
PALYNOLOGY CONFERENCE
MÜNSTER

*Trotusfordensis
westfalica Hanse*

20.-24. September 2026

 Universität
Münster

LWL-Museum für Naturkunde
Westfälisches Landesmuseum mit Planetarium

LWL
Für die Menschen.
Für Westfalen-Lippe.

The XII European Palaeobotany and Palynology Conference 2026 will be co-hosted by the Palaeobotany Research Group and the Geomuseum of the University of Münster, and the LWL-Museum of Natural History, Münster, Germany.

Münster is a beautiful medium-sized city in the heart of the Münsterland Cretaceous Basin, steeped in more than 1,200 years of history. The city spawned the Anabaptist Rebellion during the Protestant Reformation in 1534, and hosted the signing of the Treaty of Westphalia, ending the Thirty Years' War in Europe in 1648. Münster is the cultural centre of Westphalia and a famous "bicycle capital" of Germany.

Science has always shaped the image of the city. As one of the largest academic locations in Germany, it has around 65,000 students at nine universities and colleges. With more than 43,000 students and over 120 fields of study in 15 departments, the University of Münster is Germany's fifth largest university and one of the foremost centres of German intellectual life.

The LWL-Museum of Natural History was founded in 1892 at the behest of volunteer naturalists from the Münster area. The museum is beautifully located next to Münster's zoological garden and presents in changing exhibitions the natural history of Westphalia. It is today one of the most visited museums in North Rhine-Westphalia.



MEET THE HOSTS

The Palaeobotany Research Group was founded in 1968 by Winfried Remy, a student of Walter Gothan in Berlin. As an enthusiastic couple with special interest in Palaeozoic plants, Winfried and Renate Remy established Münster as a renowned centre of palaeobotanical research that received international recognition especially for the pioneering work on Rhynie Chert gametophytes. This research scope was broadened further when Hans Kerp was appointed professor for palaeobotany upon Remy's retirement in 1991. Throughout his intensely productive and successful career, Hans further expanded Münster's palaeobotanical expertise, not the least through his fruitful mentorship that spawned abundant academic offspring.

Today, it is a diverse team of palaeobotanists spread across three scientific institutions – the LWL-Museum of Natural History, the Geomuseum of the University of Münster, and the Palaeobotany Research Group at the Faculty of Geosciences of the University of Münster – that invites you cordially to be part of the XII EPPC 2026 in Münster.



Benjamin Bomfleur
Head of the Palaeobotany Research Group
University of Münster
(bomfleur@uni-muenster.de)



Christian Pott
Head of the Palaeontology Department
and Curator of Palaeobotany
LWL-Museum of Natural History
(christian.pott@lwl.org)



Haytham El-Atfy
Research associate
University of Münster
(helatfy@uni-muenster.de)



Steffen Trümper
Curator of Geology and Palaeontology
Geomuseum of the
University of Münster
(steffen.truemper@uni-muenster.de)



Michael Krings
Curator of Palaeobotany
Bavarian State Collection of Geology
and Palaeontology, and professor LMU Munich
(krings@snsb.de)



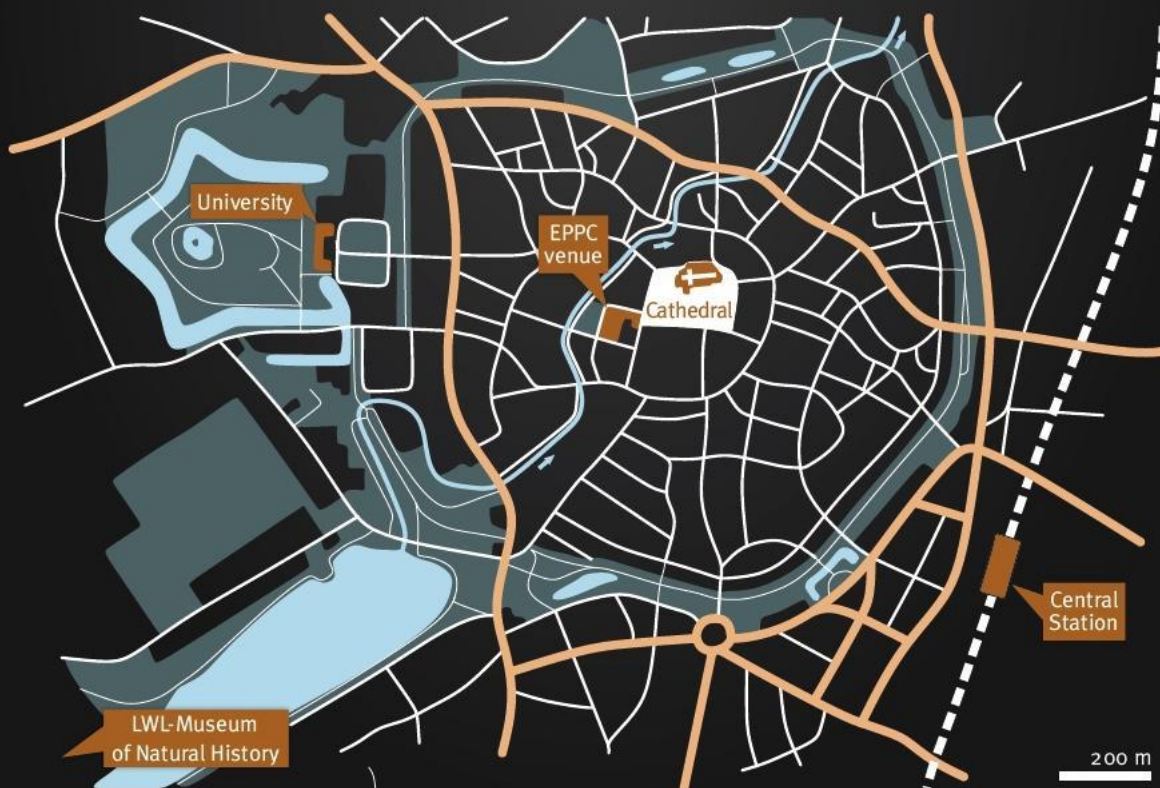
Philip Jardine
Research associate
University of Münster
(jardine@uni-muenster.de)

MEET THE HOSTS

The conference takes place at the Fürstenberghaus in the heart of the city, with the Münster cathedral and the famous city market at sight. This university building is named after Franz Friedrich Wilhelm von Fürstenberg, a late 18th century statesman known for his progressive politics. Due to its central position, many sights of the city are very close by. Münster's main railway station is just a 15-min walk away, while the international airports of Düsseldorf and Cologne are 1.5 hours from the city by train. A well organized public transport in Münster connects the different conference locations and hotels.



THE VENUE



Deadline for submission: 1. September 2025

On the occasion of the XII EPPC 2026 it is our pleasure to invite proposals for symposia. We welcome submissions from every field of palaeobotany and palynology that:

- have a descriptive, catchy title,
- are of interest for a broad community,
- explain their purpose in a concise, meaningful abstract (100 words maximum),
- provide the names of chairpersons with affiliations and a list of possible speakers.

Please note that only one proposal per individual is accepted. The program committee will review the submissions and eventually suggest changes or merging of symposia due to the organisation of the whole conference. An example for a possible contribution is provided on the following page.

Please send your proposal via email to Christian Pott (christian.pott@lwl.org)

CALL FOR SYMPOSIA



Leafy shoot of the sea grass *Thalassocharis westfalica* from the Campanian (Upper Cretaceous) of Stemwede-Haldem, Westphalia. Photo: LWL/Steinweg



Cross-section of a young axis of *Rhynia gwynne-vaughanii* from the Devonian Rhynie Chert. Photo: Kerp

Greening at the brink – Palaeofloras and biotic crises

Mass extinctions have fundamentally shaped palaeocommunities and the course of evolution. Understanding the causes and effects of such drastic events is therefore crucial to understand biodiversity and biosphere/geosphere interactions both in the past and present. This symposium welcomes contributions that focus on palaeofloral and palynomorph records from biotic crises in Earth History. From Snowball Earth to the Ende-Cretaceous Mass Extinction – What can palaeo-botanical and palynological assemblages tell us about the drivers, extent and consequences of incisive phases in evolution? What are the potentials and limits of the fossil record, and what new tools and cross-discipline approaches can be used?

Chairpersons: ...

Possible contributors ...

CALL FOR SYMPOSIA



Several plants built up the peat-forming forests of Pennsylvanian tropical Pangaea. Photo: Geomuseum/Steinweg.

Meeting billions of years in the Geomuseum of the University of Münster



Chasing Carboniferous forests in the Piesberg Quarry



Walking the plank in the Venne Peat Bog

Unearthing Cenozoic coastal wetlands in the Rhineland



CONFERENCE ACTIVITIES



Relaxing in Münster,
the beautiful capital
of Westphalia

Discovering Westphalian
palaeontological treasures
in the new State Exhibition of
North Rhine-Westphalia 2026.
Photo: LWL/Steinweg



Decoding nature
in the LWL-Museum
of Natural History.
Photo: LWL/Steinweg



Immersing in Space in the
modern planetarium of the
LWL-Museum of Natural
History Münster.
Photo: LWL/Steinweg

CONFERENCE ACTIVITIES

1. September 2025

opening conference website – deadline for symposia submission

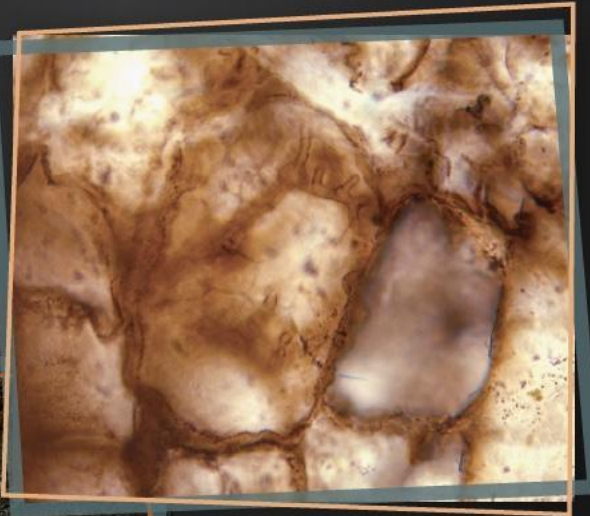
1. October 2025: second circular

registration fees – conference schedule – field trips – list of symposia

1. February 2026: third circular

information on hotels – public transport

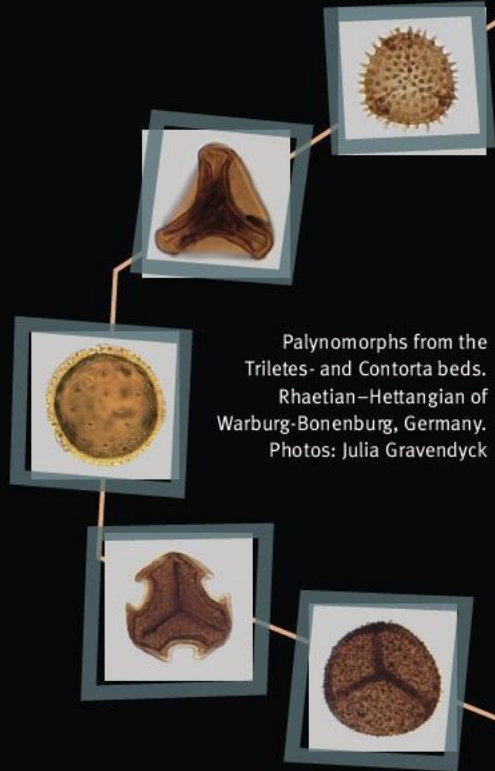
Permineralised fungal hyphae
in extraxylary conifer cells,
lower Permian, Germany.



Studying Carboniferous arborescent lycopsid plants in situ in a coal mine in Hattingen in the Ruhr Area, Germany. Photo: LWL/Steinweg

WHAT IS NEXT?

SEE YOU IN MÜNSTER IN 2026



Palynomorphs from the
Triletes- and Contorta beds.
Rhaetian–Hettangian of
Warburg-Bonenburg, Germany.
Photos: Julia Gravendyck



Münster's city hall: signing location
of the Treaty of Westphalia in 1648.

App Sto